

ANNEXURE

ANNEXURE-1 SASE REPORT ON AVALANCHE PROTECTION STRUCTURES

Conceptual layout of Avalanche Protection Structures between Z Morh & Zojila Tunnels



**Snow and Avalanche Study Establishment
Research & Development Centre,
Him Parisar, Sector 37-A
Chandigarh-160036**

DRAFT REPORT

New Road alignment between Z Morh & Zojila Tunnels



- Length of the new alignment = 17.8 km

DRAFT REPORT

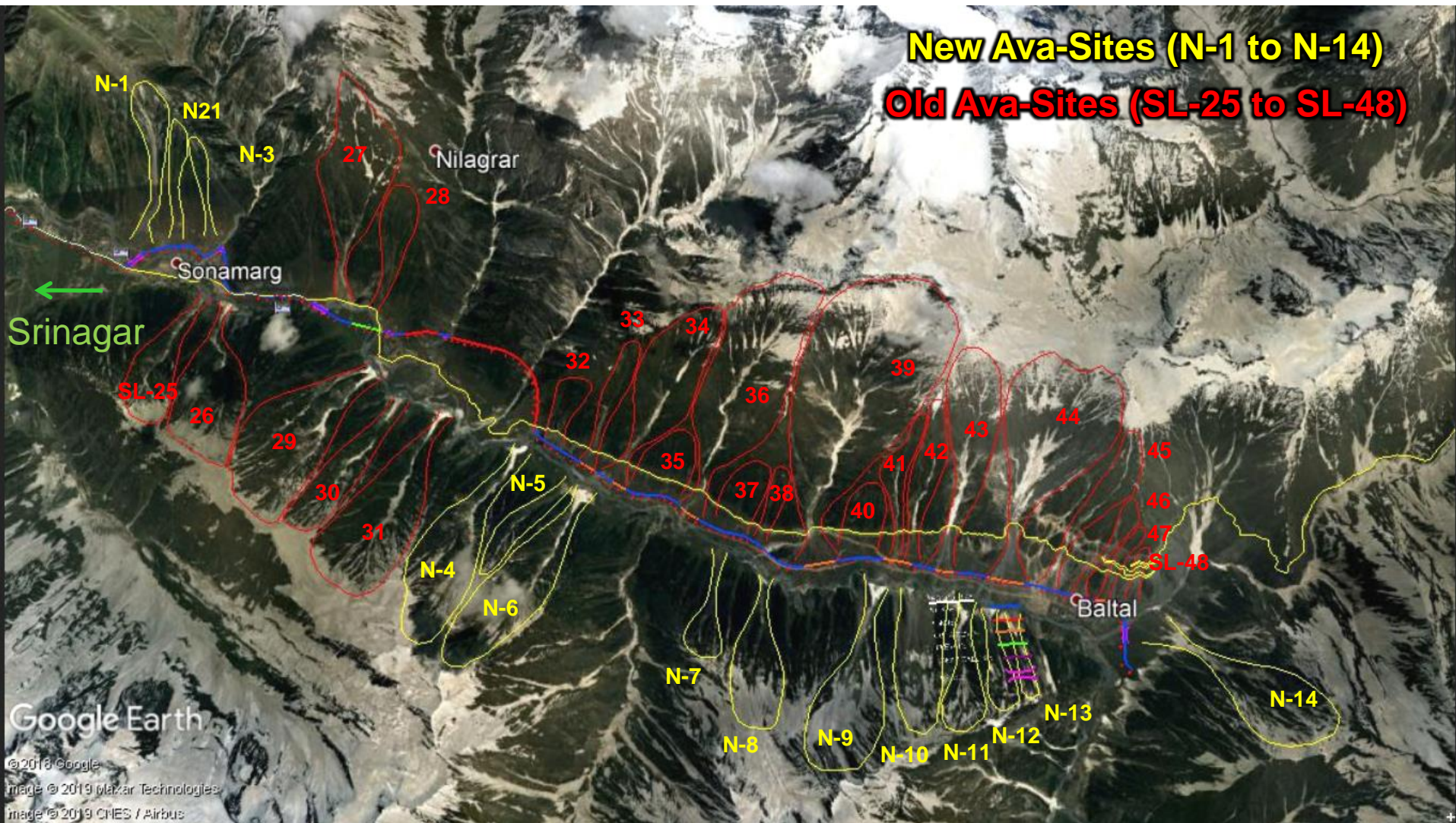
New Road alignment between Z Morh & Zojila Tunnels



- Length of the new alignment = 17.8 km (Winter view)

DRAFT REPORT

Avalanche Sites from Both Slopes



DRAFT REPORT

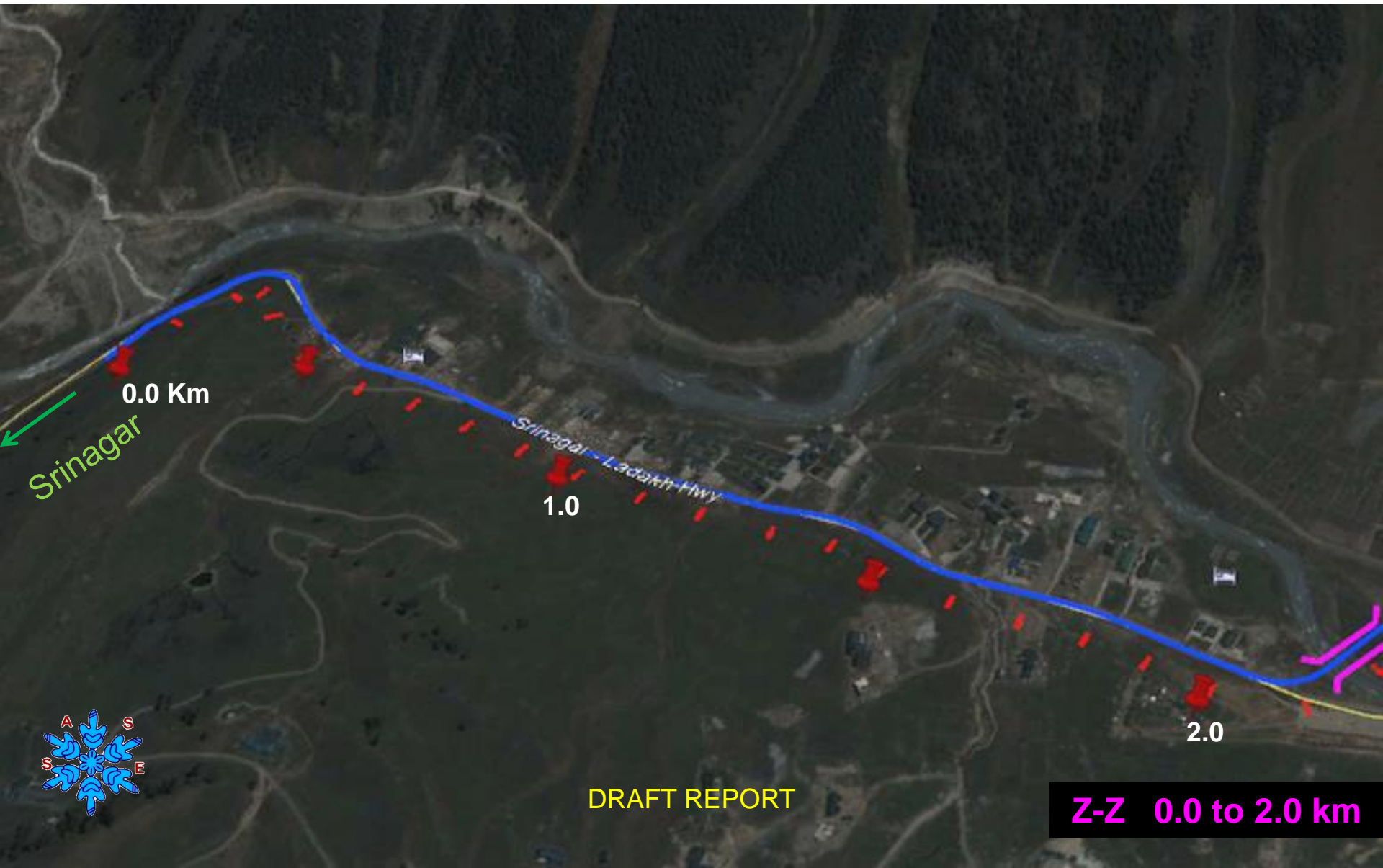
New Avalanche Sites from Opposite Slope

N-4 to N-14



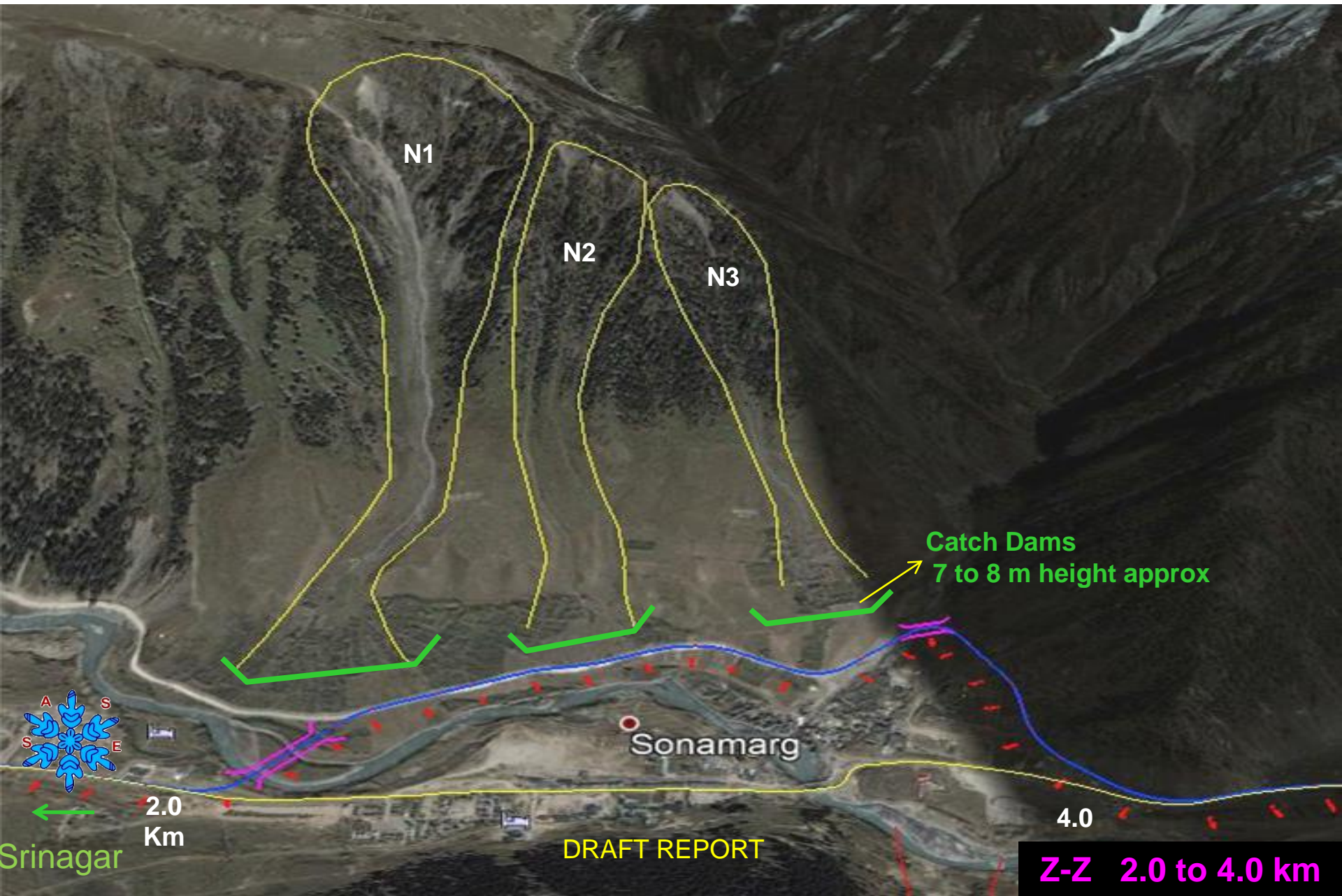
DRAFT REPORT

New Road alignment between Z Morh & Zojila Tunnels 0.0 to 2.0 Km



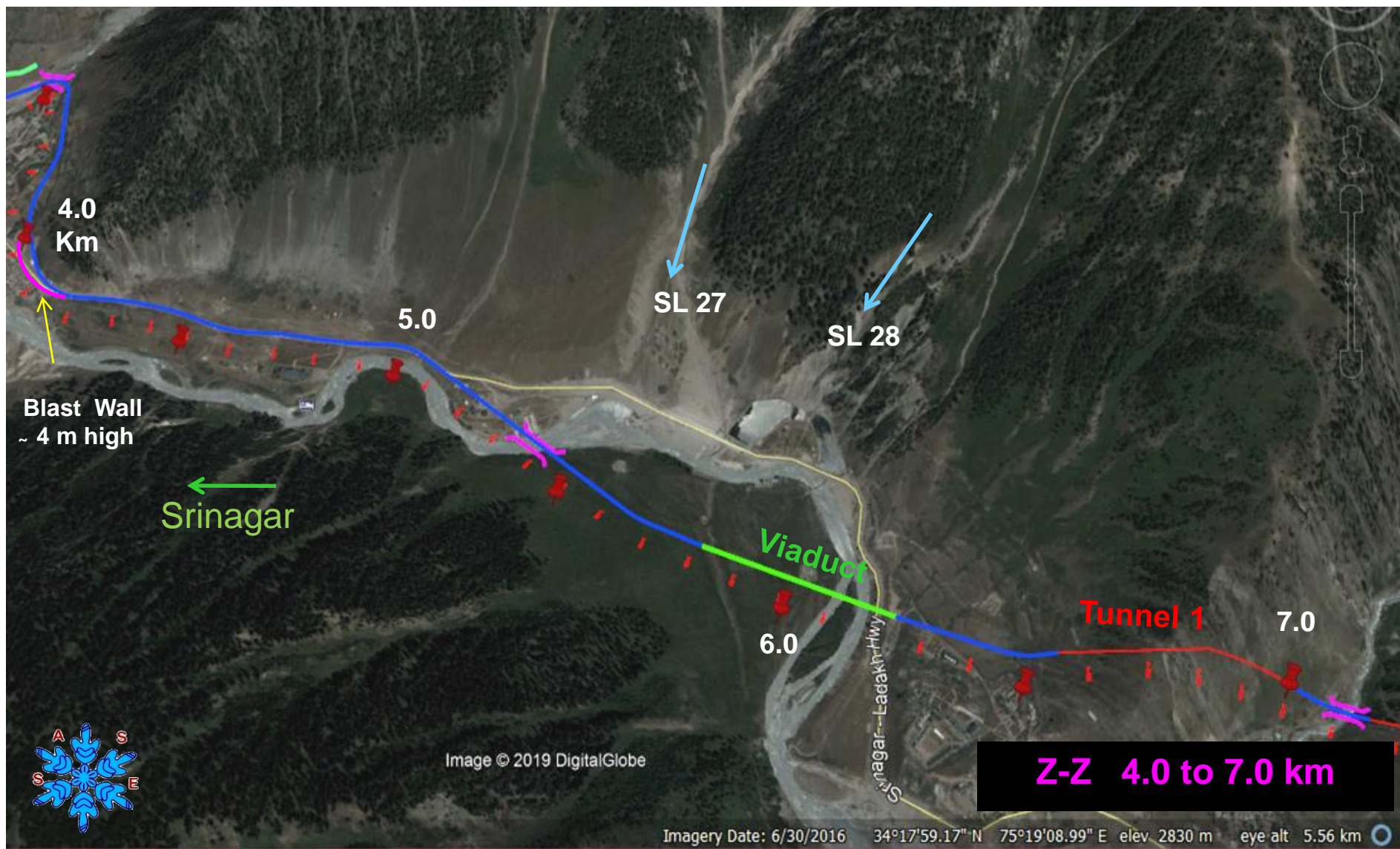
New Road alignment between Z Morh & Zojila Tunnels

2.0 to 4.0 Km



New Road alignment between Z Morh & Zojila Tunnels

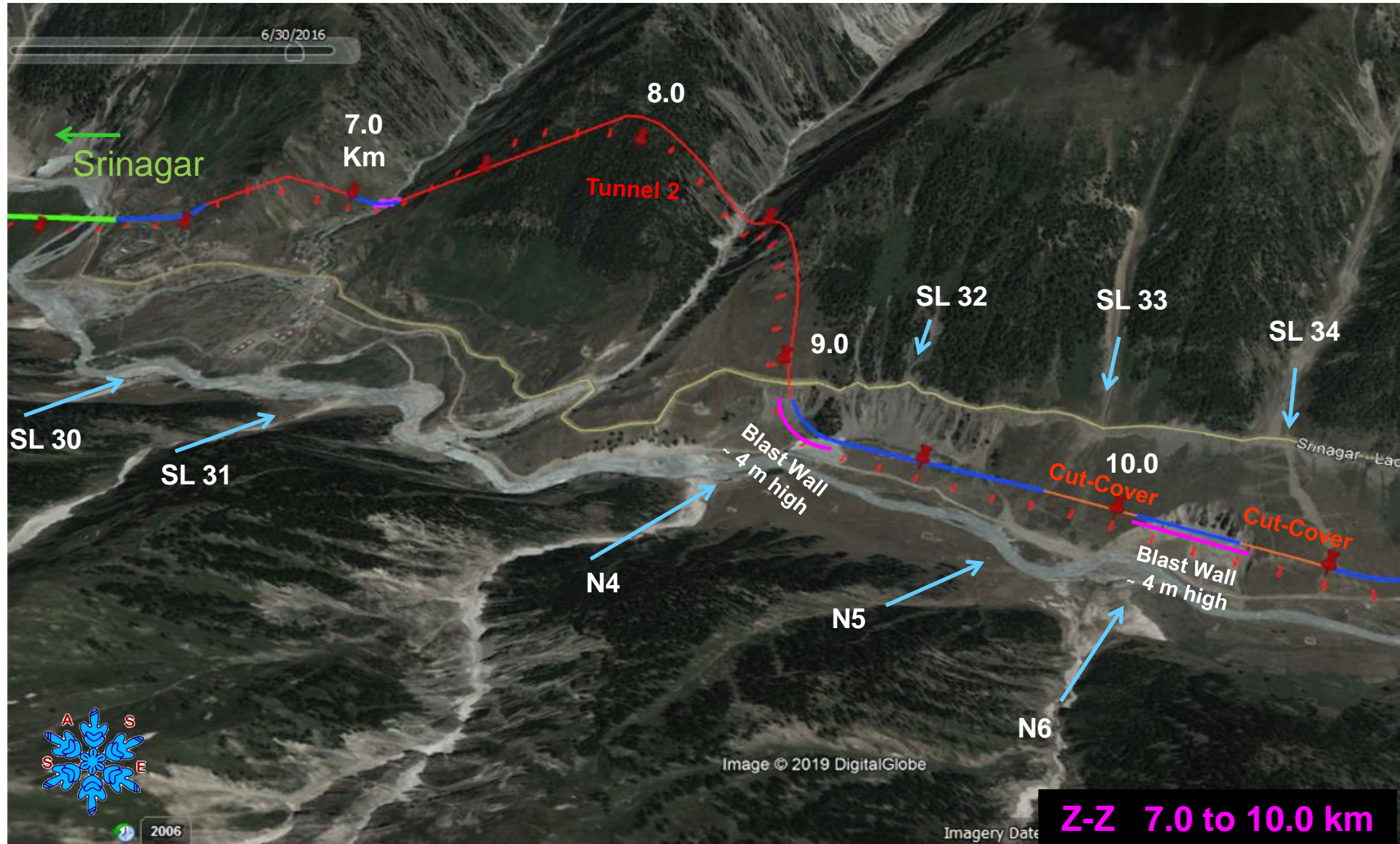
4.0 to 7.0 Km



DRAFT REPORT

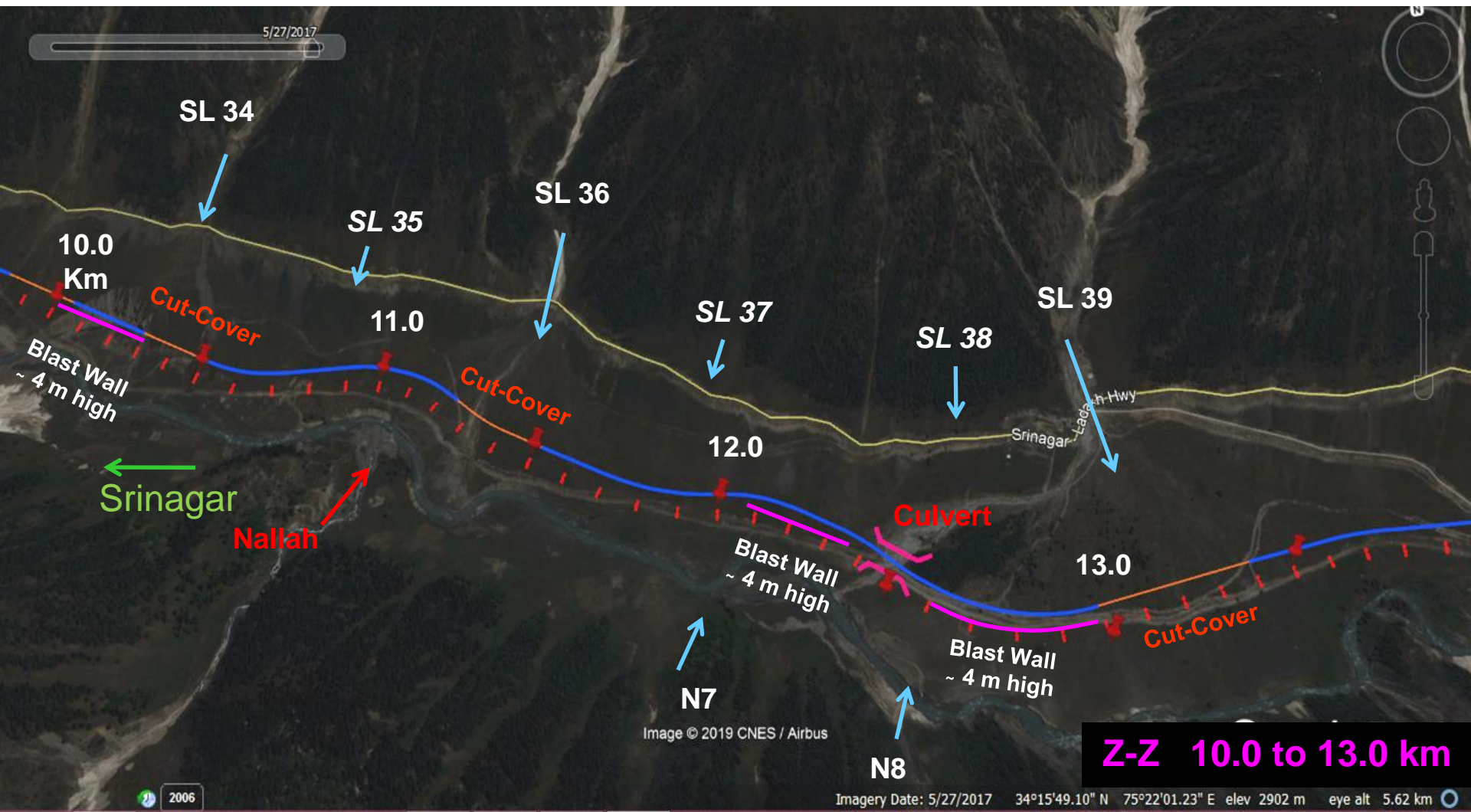
New Road alignment between Z Morh & Zojila Tunnels

7.0 to 10.0 Km



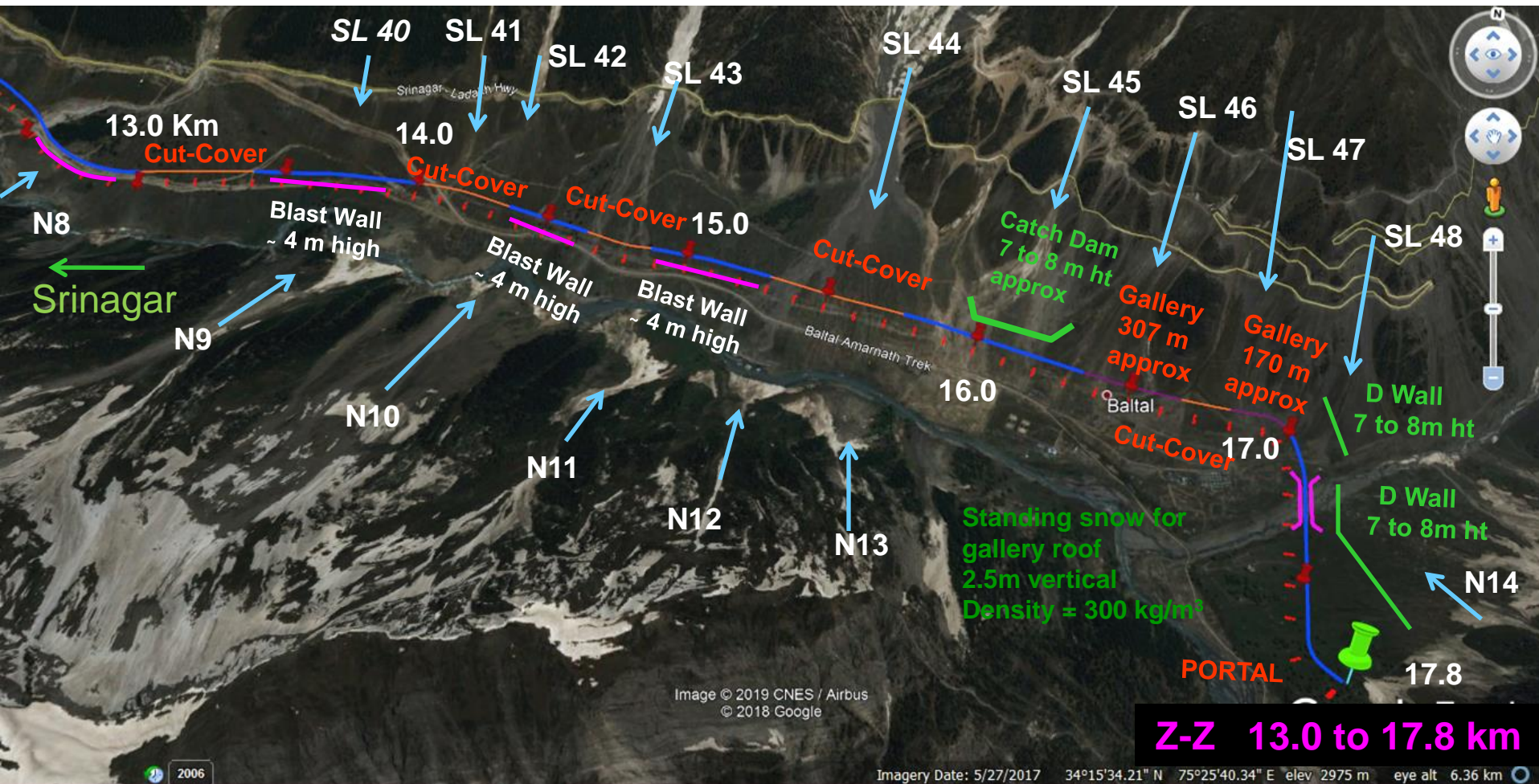
DRAFT REPORT

New Road alignment between Z Morh & Zojila Tunnels 10.0 to 13.0 Km



DRAFT REPORT

New Road alignment between Z Morh & Zojila Tunnels 13.0 to 17.8 Km



DRAFT REPORT

- Guide walls for Galleries and Cut-Cover as per Contours

